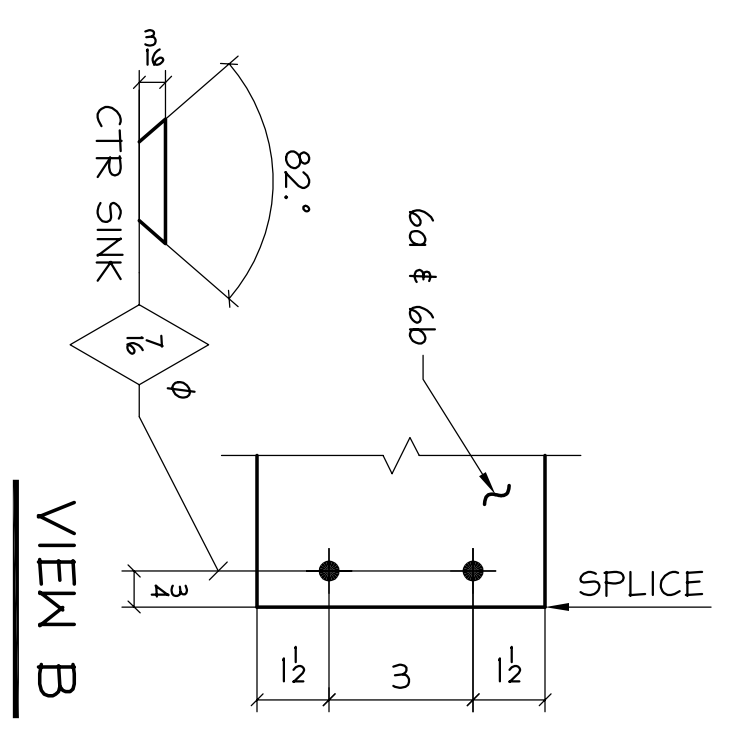
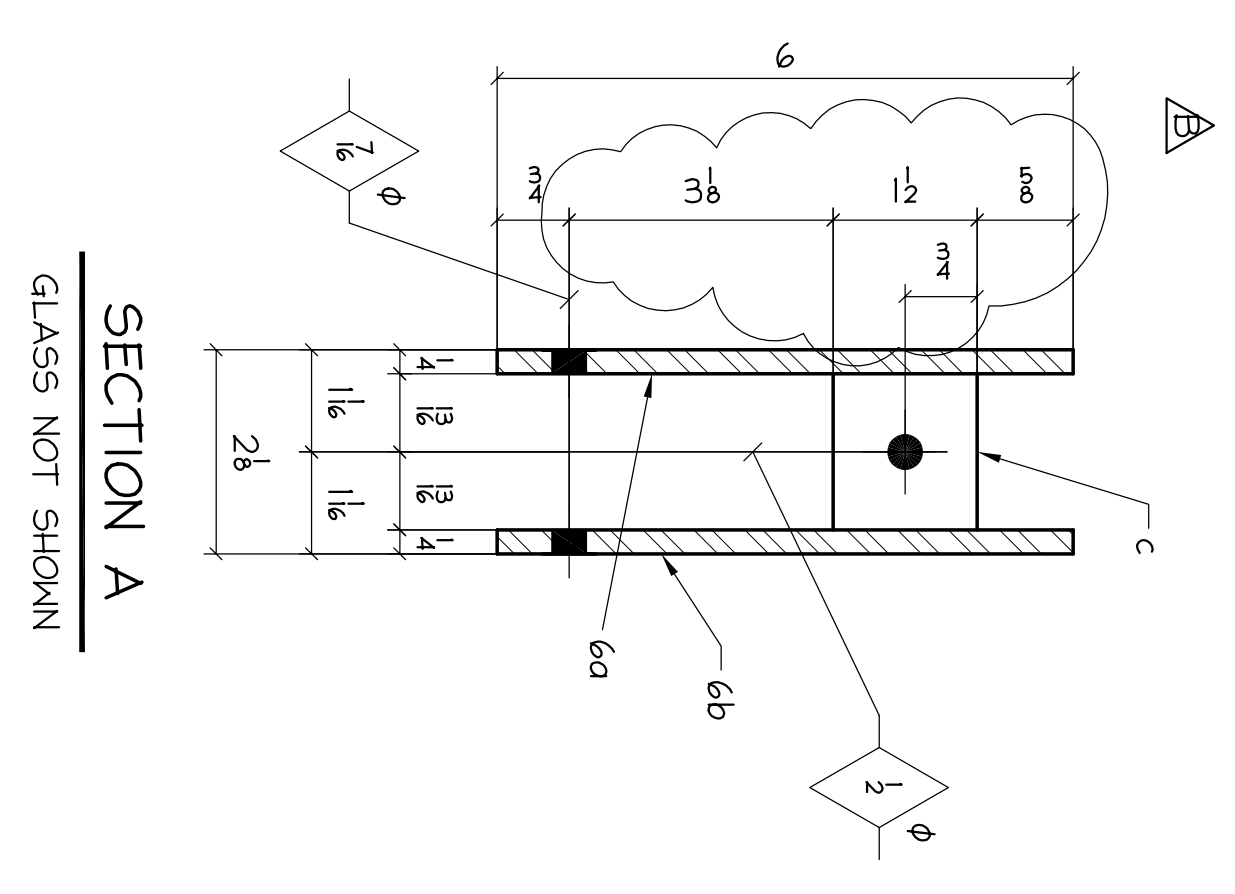


SPA-6 ~ FRAME ASSY ~ ONE REQD
GLASS SHOWN FOR INFORMATION ONLY



BILL OF MATERIAL

NO. TO SHIP	TOTAL	PCS	DESCRIPTION	LENGTH	REMARKS	QTY	WEIGHT
MARK	NO. TO SHIP			IN.		UNIT	TOTAL
ONE SPA-6			FRAME ASSY				
	ONE	6a	1 1/2 X 6	11	0	A36 - ROLLED	
	ONE	6b	1 1/2 X 6	9	1 1/2	A36 - ROLLED	
	6	c	1 1/2 X 1 1/2	0	1 1/2	A36	
	ONE	6d	1 1/2 X 2 1/2	0	6	A36 - ROLLED	
	ONE	6f	1 1/2 X 2 1/2	0	6	A36 - ROLLED	
			FIELD HARDWARE				
		b1	1/2 SS CAP SCREW	0	21	TC491955A513	
		b2	1/2 SS ACORN NUT			TC491955A5130	
		b3	1/2 SS FLAT WASHER			TC491950A030	
		b4	3/8 NYLON BUSHING			TC4638K348	
		b5	3/8 SS TECH SCREW			TC491771A619	
		b6	1/2 GASKET MATERIAL	21	0	LN FT.	

FABRICATION NOTES:

HOLES UNO: 5/8"

WELD:

REF DWG: DE-1A

MATERIAL UNO: LAMINATED GLASS

PAINT: Copper Penny - 818-8

NOTES:

VERIFICATION OF DIMENSIONS, DETAILS, AND ETC. ARE REQUESTED, WHERE INDICATED, IF EACH VERIFICATION IS NOT NOTED OTHERWISE. IT WILL BE ASSUMED TO BE CORRECT AS SHOWN.

REV	DATE	BY	DESCRIPTION	FOR FABRICATION	FOR PURCHASING	FOR APPROVAL	DATE
B	4/14/03	ADI	REVISED DIMS				
A	3/31/03	ADI	FOR APPROVAL				

DESIGNER: Design Trends, Inc. ADI / ANGLE DETAILING, INC.
 CONTR: Gilbane Building Co. ADI JOB# 2003-265
 SAVOY STUDIOS
 ART GLASS RIBBON SCULPTURE
 GALVESTON, TX
 611 N TILLAMOOK ST PORTLAND, OR 97227
 Phone: 503.282.5095 FAX: 282.2183
 DRAWN BY: KP ADI JOB NO: 02-178 SPA-6
 CHKD BY: ADI DWG. NO: 2003-265